

SYSTEM DESIGN VS INSTALLATION

THE BEST-LAID PLANS OF MITIGATION PROFESSIONALS

Presented by: Tony McDonald



TYPICAL SSD SYSTEM DESIGN/BUILD PROCESS:

- DESIGN COMPLETED BY:
 - ENVIRONMENTAL COMPANY
- SYSTEM INSTALLED BY:
 - UNDERGROUND PIPING: PLUMBING OR CONCRETE
 - MONITORING SYSTEM: ELECTRICAL
 - VAPOR BARRIER: CONCRETE
 - RISER PIPING: 1ST YEAR PLUMBING APPRENTICE
 - FANS: MECHANICAL CONTRACTOR
 - ELECTRICAL: ELECTRICIANS





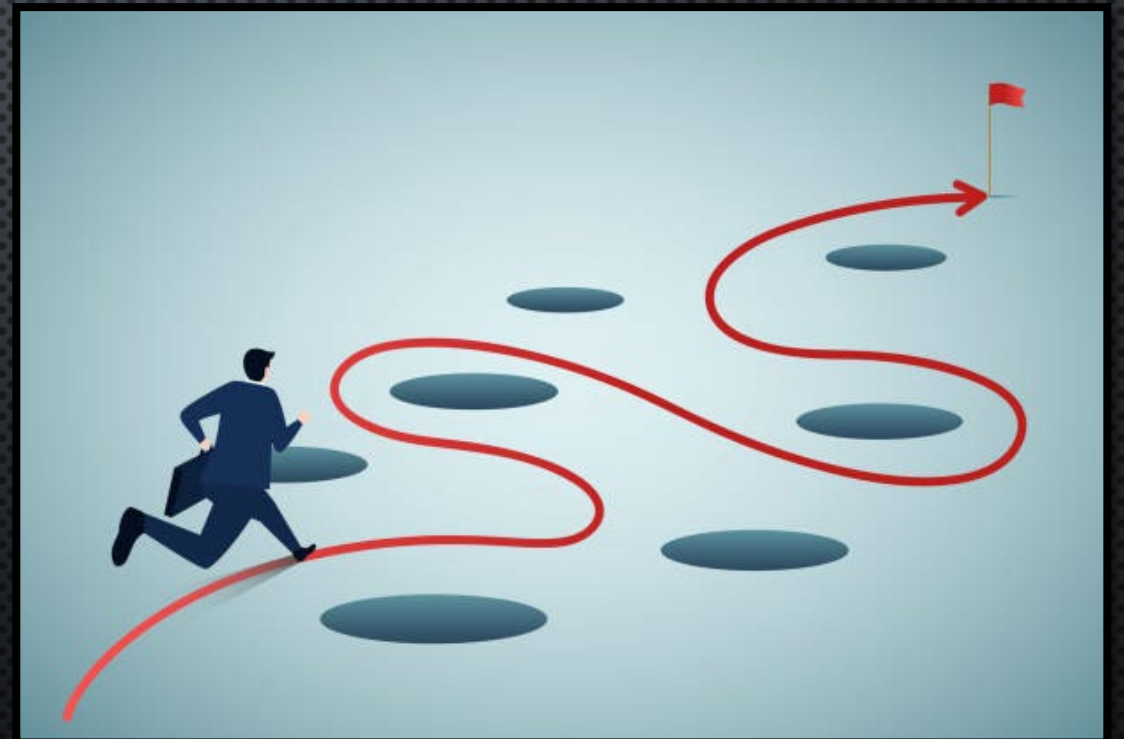
EXPERIENCED PROFESSIONAL
PROVIDING
INSTALLATION OVERSITE

THE NO HEADACHE APPROACH:

- DESIGN COMPLETED BY:
 - EXPERIENCED LICENSED/CERTIFIED SSD SYSTEM DESIGN PROFESSIONAL.
- SYSTEM INSTALLED BY:
 - UNDERGROUND PIPING: SSD SYSTEM INSTALLATION PROFESSIONALS.
 - MONITORING SYSTEM: SSD SYSTEM INSTALLATION PROFESSIONALS.
 - VAPOR BARRIER: SSD SYSTEM INSTALLATION PROFESSIONALS.
 - RISER PIPING: SSD SYSTEM INSTALLATION PROFESSIONALS.
 - FANS: SSD SYSTEM INSTALLATION PROFESSIONALS.
 - ELECTRICAL: ELECTRICIANS.
- OVERSITE BY:
 - EXPERIENCED LICENSED/CERTIFIED SSD SYSTEM INSTALLATION PROFESSIONAL.

9 POTENTIAL ISSUES DURING INSTALLATION

- AND HOW TO AVOID THEM



ISSUE # 1: POOR COMMUNICATION

New Construction SSD System Installation Coordination Overview

Tony McDonald
A-Z Solutions, Inc



© 2023 - A-Z Solutions, Inc

1



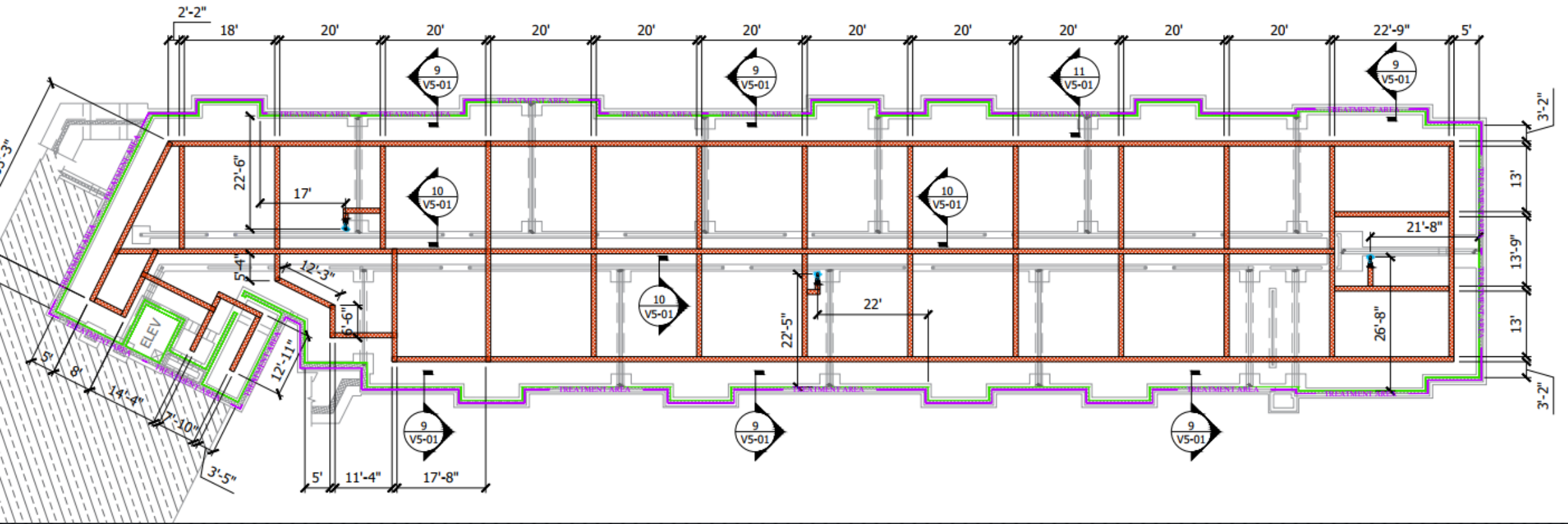
TRENCH DRAINS

IF TRENCH DRAINS ARE SECURED TO A FOUNDATION, THEY MUST BE INSTALLED OVER A PIECE OF BARRIER. ONCE THE TRENCH DRAIN IS COMPLETED, THE BARRIER IS WRAPPED AROUND THE DRAIN UNTIL THE GRAVEL IS INSTALLED. THIS PROTECTS THE VAPOR BARRIER AND THE TRENCH DRAIN DURING CONSTRUCTION.

© 2023 - A-Z Solutions, Inc

4

HAVE A WRITTEN PLAN WITH PICTURES FOR DIRECT COORDINATION
WITH THE FOREMAN. SKIP THE PM's.



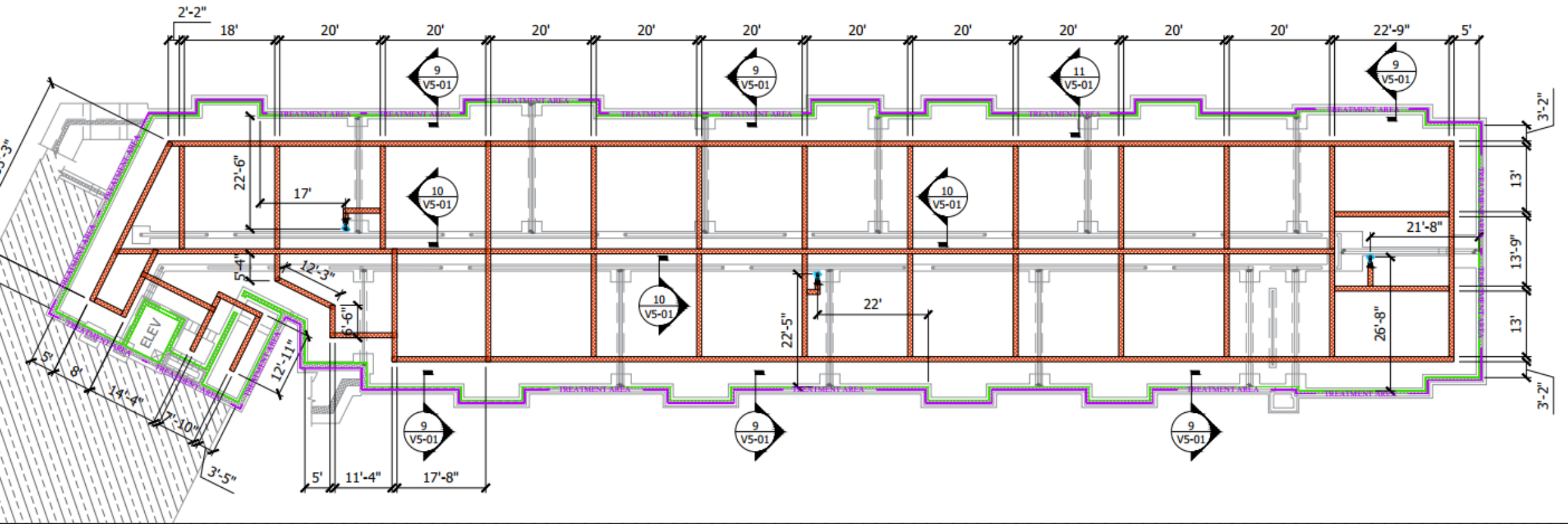
ISSUE #2 – UNDERGROUND OVERSIGHTS



BONUS TIP: PUT THE MATTING ON THE SUBGRADE BEFORE THE AGGREGATE INSTALLATION SO YOU DO NOT HAVE TO COME BACK AND DIG TRENCHES FOR IT AFTERWARD.

WHY IS THE MATTING ON TOP OF THE AGGREGATE?





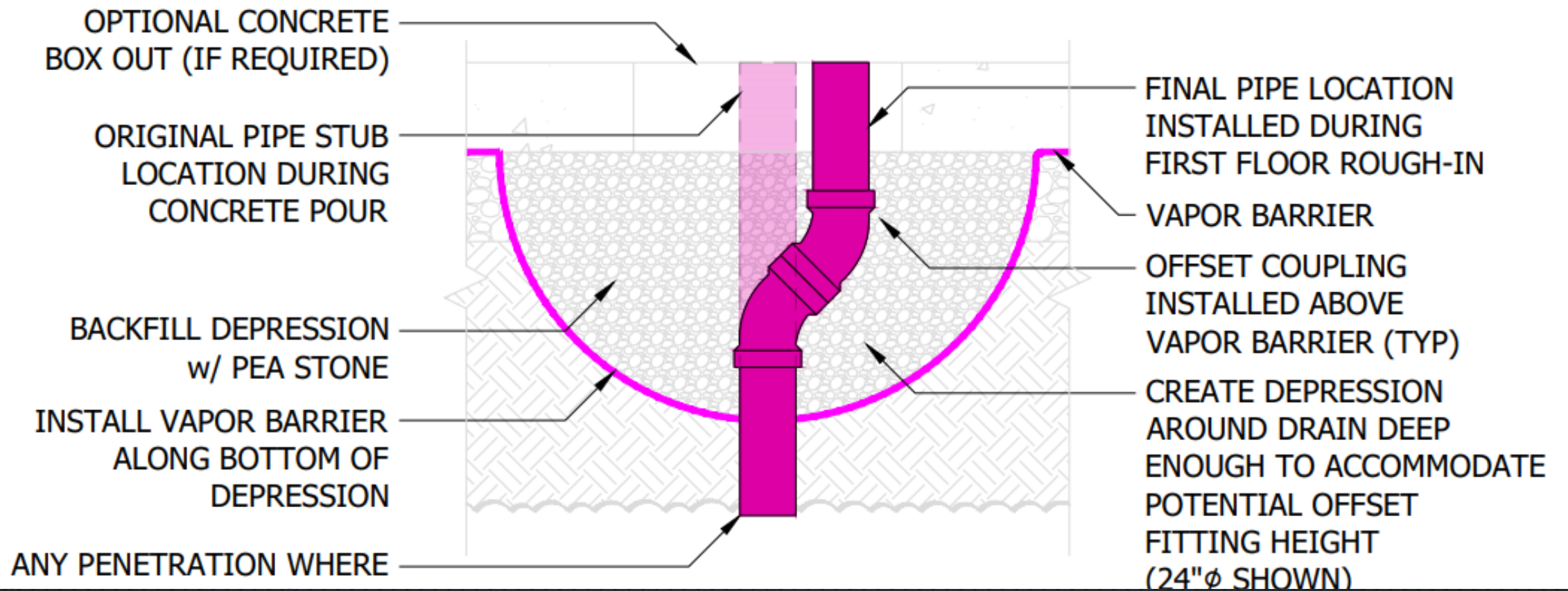
NO SINGLE BREAK IN ANY SECTION OF THE GRID
WILL COMPROMISE THE EFFECTIVENESS
OF THE SYSTEM



ISSUE #3 –
MO MEASUREMENTS,
MO PROBLEMS



THE PLUMBER CUT THE VAPOR BARRIER FOR 42 SHOWER PANS DUE TO MEASUREMENT ISSUES. WE DID NOT FIND OUT UNTIL 3 WEEKS BEFORE THE PROJECT COMPLETION. EVERY DRAIN HAD TO BE EXPOSED AND REPAIRED.



THIS COSTLY ERROR COULD HAVE BEEN PREVENTED HAD THEY LISTENED DURING THE COORDINATION MEETINGS. THE PREVENTION OF THIS ISSUE IS ALMOST FREE.

ISSUE #4 – 1 STEP FORWARD...





ISSUE #5 – BURYING YOUR BARRIER

DEPTH DOES NOT PROTECT THE BARRIER.
IT JUST MAKES REPAIRS MORE DIFFICULT.



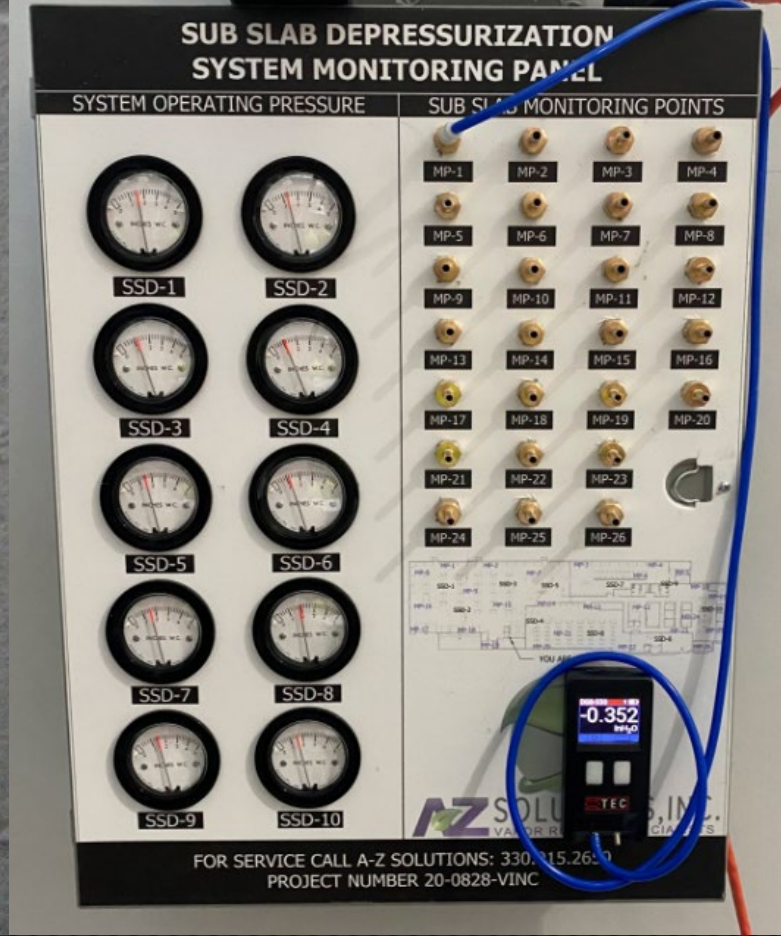


ISSUE #6 – WELD, BABY, WELD

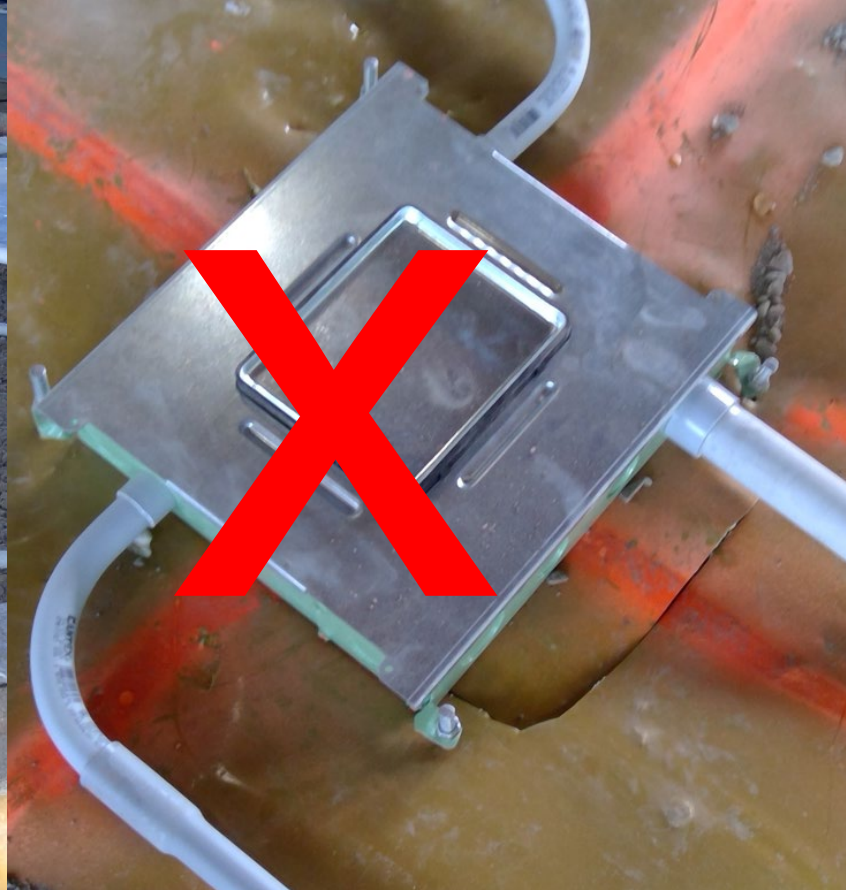




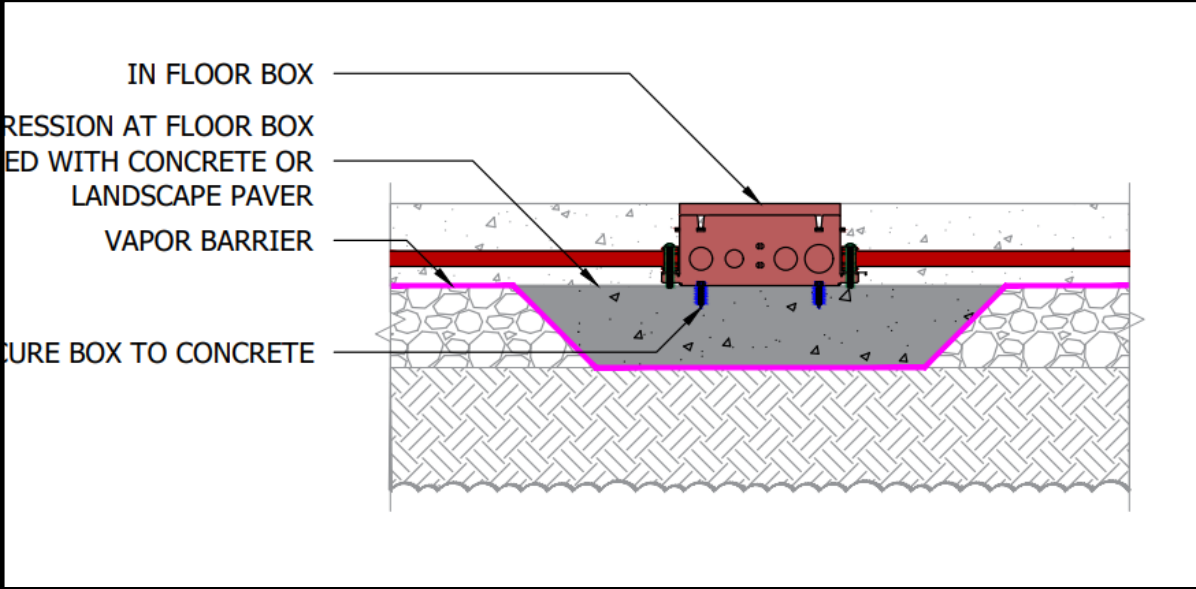
ISSUE #7 – DON'T FORGET THE MONITORING SYSTEM



CENTRAL MONITORING STATION



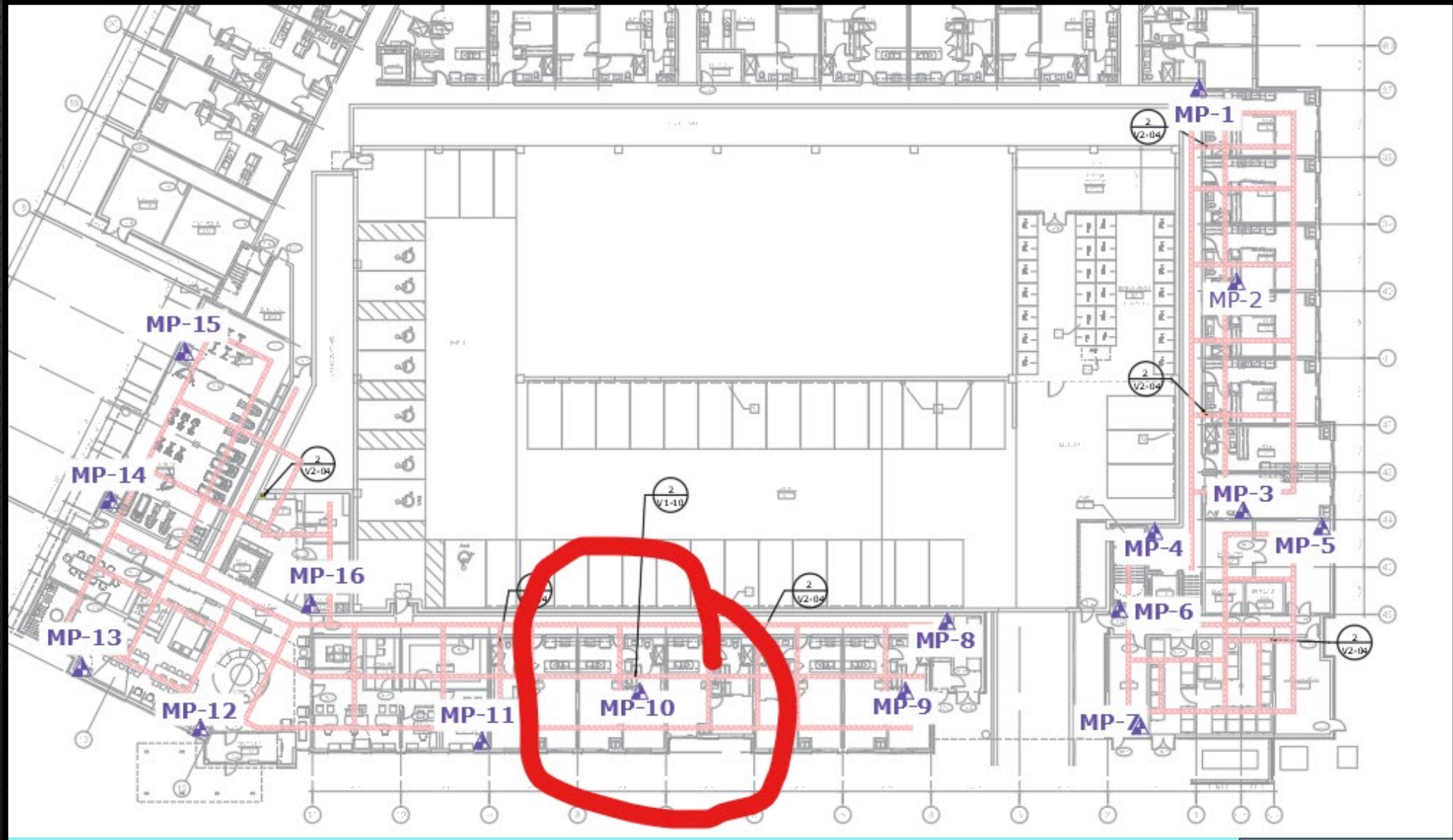
ISSUE #8 – ELECTRICIANS





ISSUE # 9 – WHICH ONE OF THEM

PFE WAS EXCELLENT EVERYWHERE BUT HERE.

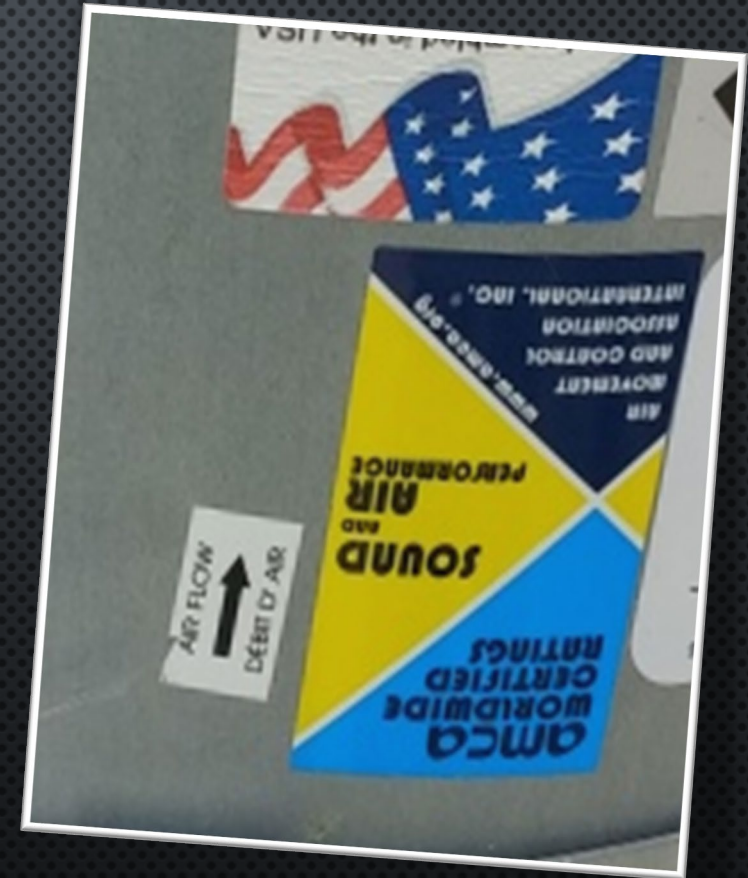




WHICH ONE IS THE
SSD SYSTEM?



ISSUE # 10 – THAT'S NOT HOW THAT WORKS



2024 INDOOR ENVIRONMENTS SYMPOSIUM

THANK YOU!



TONY McDONALD

E: TONY@AZSOLUTIONS.COM

D: 330.915.2654